



Order Number Description

XX XX XX — X XX XX

Case Style	Lens Material	Dial Size	Bushing	Special Features	Temperature Ranges	Stem Length
---------------	------------------	--------------	---------	---------------------	-----------------------	----------------

Example: RG1350-R1712 translates to:

- R** = Rear Mounting
- G** = Glass lens
- 13** = 3" dial
- 50** = 1/2" NPT connection
- R** = With recalibration feature
- 17** = 50° to 400°F temperature range
- 12** = 12" stem

Case Styles

- R** = Rear Mounting
- B** = Bottom Mounting
- A** = Any Angle (5" recal only)

Lens Materials

- G** = Glass (not available for 4" max/min)
 - P** = Plexiglas
 - T** = Tempered Glass
- (not available in 1" or 2" dial sizes)

Dial Sizes

11 = 1", **12** = 2", **13** = 3", **14** = 4", & **15** = 5"

Bushing

- 00** = Unthreaded (1" & 2" dial sizes only)
- 50** = 1/2" NPT
- 37** = 3/8" NPT (special orders only)
- 25** = 1/4" NPT
(2" dial size only & special orders only)

Special Features

- 0** = None
- R** = With recalibration (2", 3", & 5" dial sizes only)
- M** = Max/min indicating pointer (4" size only)

Stem Lengths

25 = 2 1/2", **04** = 4", **05** = 5 1/32", **06** = 6",
09 = 9", **12** = 12", **15** = 15", **18** = 18", & **24** = 24"

NOTE: Other ranges, scales, stem lengths, dial colors, and features are available by special order if quantities justify. Call your Rochester Gauges representative or call us directly for information regarding the availability and cost of special orders.

Temperature Ranges

(See series for available ranges)

- 01** = -150° to 50°F (3" & 5" dials only)
- 03** = -50° to 120°F (excluding 1" & 4" dials)
- 06** = -40° to 160°F (1" & 5" dials only)
- 08** = 0° to 100°F (excluding 1",
4" max./min. dials, 4" min. stem length)
- 10** = 0° to 300°F (excluding 1" dials)
- 11** = 0° to 500°F (excluding 1" dials)
- 12** = 0° to 800°F (excluding 1" dials &
4" max./min. dials)
- 13** = 25° to 125°F (4" min. stem length,
excluding 4" max./min. dials)
- 14** = 30° to 240°F
- 16** = 50° to 350°F (excluding 1" & 4" dials)
- 17** = 50° to 400°F (excluding 1" dial)
- 19** = 150° to 750°F (excluding RG1250 & 3" dials)
- 21** = 200° to 1000°F (excluding 1" dial)
- 24** = 0° to 220°F (excluding 4" dial)
- 25** = -70° to 150°F (excluding 1" dial)
- 49** = 0° to 250°F (excluding 1" dial)

- 28** = -50° to 50°C (excluding 1" & 4" dials)
- 30** = -10° to 110°C (excluding 1" dial)
- 31** = 0° to 50°C (excluding 1" &
4" dials, 4" min. stem length)
- 32** = 0° to 150°C (excluding 4" dial)
- 33** = 0° to 200°C (excluding 1" &
4" dials without max./min.)
- 34** = 0° to 300°C (excluding 1" & 4" dials)
- 35** = 0° to 400°C (excluding 1" dial)
- 48** = 0° to 250°C (1" dial only)
- 56** = 100° to 540°C (excluding 1", 2", & 4" dials)
- 64** = 0° to 120°C (4" dial only)

Dual Scale Temperature Ranges

- 40** = -70° to 50°C (excluding 1" & 4" dials)
-90° to 130°F
- 43** = 0° to 300°C (excluding 1" & 4" dials)
40° to 570°F
- 68** = 10° to 150°C (excluding 1", 2", & 4" dials)
50° to 300°F

Application

These 1" [25 mm] pocket thermometers are used for spot checking temperatures in process industries such as oil, chemical, food and dairy, and are also extensively used in the refrigeration and air conditioning trades.

Materials Of Construction

Case, Stem, Bezel & Nut

Stainless steel

Dial Face

Anodized aluminum

Sensing Element

Bimetallic

Lens

Plexiglas on the seven low ranges and glass lens on the two elevated temperature ranges



General Specifications

For greatest accuracy, the stem should be inserted 2" into liquids and 4" into gases. Prescribed accuracy is within 1% of scale range. Each thermometer is hermetically sealed and dampened.

How To Order

- R** = Rear mounted
- P** = Plexiglas lens (low ranges)
- G** = Glass lens (high ranges)
- 11** = 1" size
- 00** = Non-threaded connection
- = Hyphen
- 0** = No special feature
- 06** = -40° to +160°F temperature range
- 05** = 5 1/32" stem length

Example: RG1100-00605

Available Temperature Ranges

Fahrenheit		Centigrade	
06	-40° to 160°	32	0° to 150°
13	25° to 125°	48	0° to 250°
14	30° to 240°		
19	150° to 750°		
24	0° to 220°		
43	50° to 500°		

Other ranges and scales may be available if justified by quantity.

Application

These 2" [50 mm] thermometers are all purpose units for laboratory and general testing service. They can be inserted directly into vessels, vats, glassware or trays with simple mountings or supports or into air ducts, channels and open passages.

Materials Of Construction

Case, Stem, Bezel & Nut

Type 304 stainless steel case

Dial

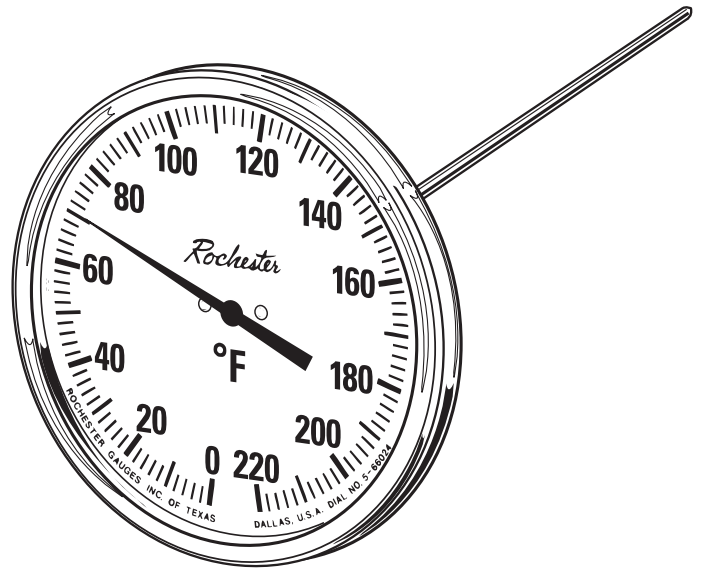
Aluminum

Sensing element

Bimetallic

Lens

Glass (Plexiglas available at extra cost)



General Specifications

It is available with or without a recal feature and it has a slender pointer to facilitate precise readings of the scale. Standard stem lengths are 6", 9", 12" and 18". Prescribed accuracy is 1% of scale range. Each thermometer is hermetically sealed and dampened.

How To Order

- R** = Rear mounted
- G** = Glass lens (high ranges)
- 12** = 2" size
- 00** = Unthreaded bushing
- = Hyphen
- 0** = No special feature
- R** = Recal feature
- 24** = 0° to 220°F temperature range
- 09** = 9" stem length

Example: RG1200-R2409

Available Temperature Ranges

Fahrenheit	
03	-50° to 120°
08	0° to 100°
10	0° to 300°
11	0° to 500°
13	25° to 125°
14	30° to 240°
16	50° to 350°
17	50° to 400°
19	150° to 750°
20	200° to 400°
21	200° to 1000°
24	0° to 220°
25	-70° to 150°
49	0° to 250°

Centigrade	
26	-100° to -50°
30	-10° to 110°
31	0° to 50°
32	0° to 150°
33	0° to 200°
34	0° to 300°

Dual-scale	
40	-70° to 50°C -90° to 130°F
43	0° to 300°C 40° to 570°F

Other ranges and scales may be available if justified by quantity.

Application

These 2" [50 mm] thermometers are widely used in general to heavy duty service in the oil, chemical, food, paper, textile and power industries where small size is desirable. They withstand rough field treatment and perform superbly in difficult environments.

Materials Of Construction

Case, Stem, Bezel & Nut

Type 304 stainless steel case

Dial

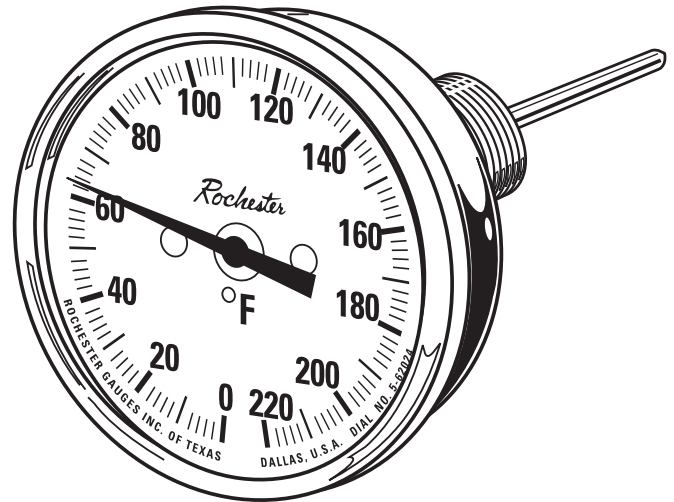
Aluminum

Sensing element

Bimetallic

Lens

Glass (Plexiglas available at extra cost)



General Specifications

This thermometer is available with or without a recal feature and a 1/2" NPT threaded connection is standard. For greatest accuracy, the stem should be inserted 2" into liquids and 4" into gases. Prescribed accuracy is 1% of scale range. Each thermometer is hermetically sealed and dampened.

How To Order

R = Rear mounted

G = Glass lens

12 = 2" size

50 = 1/2" NPT threaded connection

- = Hyphen

R = Recal feature

03 = -50° to 120°F temperature range

04 = 4" stem length

Example: RG1250-00304

Available Temperature Ranges

Fahrenheit	
03	-50° to 120°
08	0° to 100°
09	0° to 200°
10	0° to 300°
11	0° to 500°
12	0° to 800°
13	25° to 125°
14	30° to 240°
16	50° to 350°
17	50° to 400°
21	200° to 1000°
24	0° to 220°
25	-70° to 150°
49	0° to 250°

Centigrade	
29	-50° to 100°
30	-10° to 110°
31	0° to 50°
32	0° to 150°
33	0° to 200°
34	0° to 300°

Dual-scale	
40	-70° to 50°C -90° to 130°F
42	0° to 150°C 40° to 300°F
43	0° to 300°C 40° to 570°F

Other ranges and scales may be available if justified by quantity.

Application

These 3" [75 mm] thermometers are used extensively in the oil, chemical, food, paper, textile and power industries because of their ability to withstand rough treatment and difficult environments.

Materials Of Construction

Case, Stem, Bezel & Nut

Type 304 stainless steel case

Dial

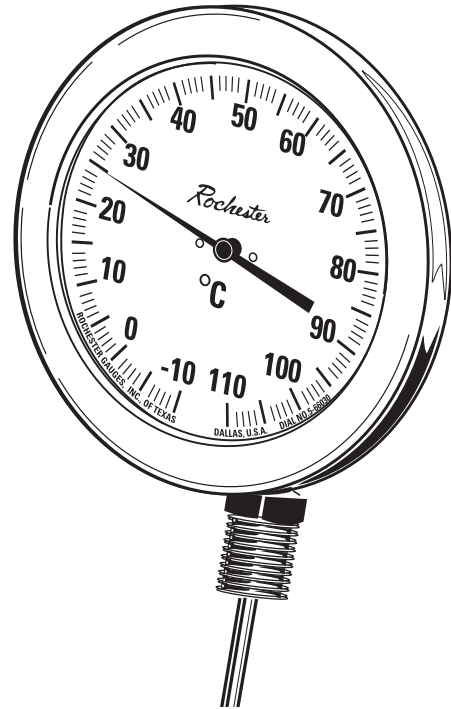
Aluminum

Sensing Element

Bimetallic

Lens

Glass (Plexiglas or tempered glass available at extra cost)



General Specifications

This thermometer incorporates a recal feature and a 1/2" NPT threaded connection as standard. For greatest accuracy, the stem should be inserted 2" into liquids and 4" into gases. Prescribed accuracy is 1% of scale range. Each thermometer is hermetically sealed and dampened.

How To Order

B = Bottom mounted

G = Glass lens

13 = 3" size

50 = 1/2" NPT threaded connection

R = Recal feature included

08 = 0° to 100°F temperature range

04 = 4" stem length

Example: BG1350-R0804

Available Temperature Ranges

Fahrenheit		Centigrade									
01	-150° to 50°	28	-50° to 50°								
03	-50° to 120°	30	-10° to 110°								
08	0° to 100°	31	0° to 50°								
10	0° to 300°	32	0° to 150°								
11	0° to 500°	33	0° to 200°								
12	0° to 800°	34	0° to 300°								
13	25° to 125°	35	0° to 400°								
14	30° to 240°	48	0° to 250°								
16	50° to 350°	56	100° to 540°								
17	50° to 400°	64	0° to 120°								
21	200° to 1000°	<table border="1"> <thead> <tr> <th colspan="2">Dual-scale</th> </tr> </thead> <tbody> <tr> <td>40</td> <td>-70° to 50°C -90° to 130°F</td> </tr> <tr> <td>43</td> <td>0° to 300°C 40° to 570°F</td> </tr> <tr> <td>68</td> <td>10° to 150°C 50° to 300°F</td> </tr> </tbody> </table>		Dual-scale		40	-70° to 50°C -90° to 130°F	43	0° to 300°C 40° to 570°F	68	10° to 150°C 50° to 300°F
Dual-scale											
40	-70° to 50°C -90° to 130°F										
43	0° to 300°C 40° to 570°F										
68	10° to 150°C 50° to 300°F										
24	0° to 220°										
25	-70° to 150°										
49	0° to 250°										

Other ranges and scales may be available if justified by quantity.

Application

These 3" [75 mm] thermometers are used extensively in the oil, chemical, food, paper, textile and power industries because of their ability to withstand rough treatment and difficult environments.

Materials Of Construction

Case, Stem, Bezel & Nut

Type 304 stainless steel case

Dial

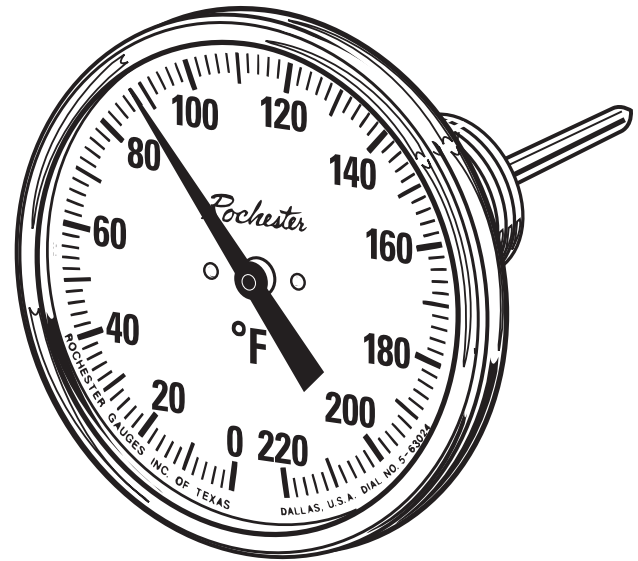
Aluminum

Sensing Element

Bimetallic

Lens

Glass (Plexiglas or tempered glass available at extra cost)



General Specifications

These thermometers are available with or without a recal feature. A 1/2" NPT threaded connection is standard. For greatest accuracy, the stem should be inserted at least 2" into liquids and 4" into gases. Prescribed accuracy is 1% of scale range. Each thermometer is hermetically sealed and dampened.

How To Order

- B** = Bottom mounted
- G** = Glass lens
- 3** = 3" size
- 50** = 1/2" NPT threaded connection
- = Hyphen
- 0** = No special feature
- R** = Recal feature included
- 10** = 0° to 300°F temperature range
- 12** = 12" stem length

Example: RG1350-R1012

Available Temperature Ranges

Fahrenheit		Centigrade	
01	-150° to 50°	28	-50° to 50°
03	-50° to 120°	29	-50° to 100°
08	0° to 100°	30	-10° to 110°
09	0° to 200°	31	0° to 50°
10	0° to 300°	32	0° to 150°
11	0° to 500°	33	0° to 200°
12	0° to 800°	34	0° to 300°
13	25° to 125°	35	0° to 400°
14	30° to 240°	48	0° to 250°
16	50° to 350°	56	100° to 540°
17	50° to 400°		
21	200° to 1000°		
24	0° to 220°		
25	-70° to 150°		
49	0° to 250°		
		Dual-scale	
		40	-70° to 50°C -90° to 130°F
		43	0° to 300°C 40° to 570°F
		68	10° to 150°C 50° to 300°F

Other ranges and scales may be available if justified by quantity.

06/01/00

Application

These 4" [100 mm] thermometers are built to NEMA standards and used extensively on outdoor substation power transformers to indicate the occurrence and extent of overload through use of an optional maximum/minimum indicating pointer, which can be manually reset. Units with and without the extra pointer are used in many other permanent outdoor applications on engines or process operations not involving severe service conditions. Where rough handling or abuse is encountered, our 3" and 5" models are recommended.

Materials Of Construction

Case, Stem, Bezel & Nut

Type 304 stainless steel case

Dial

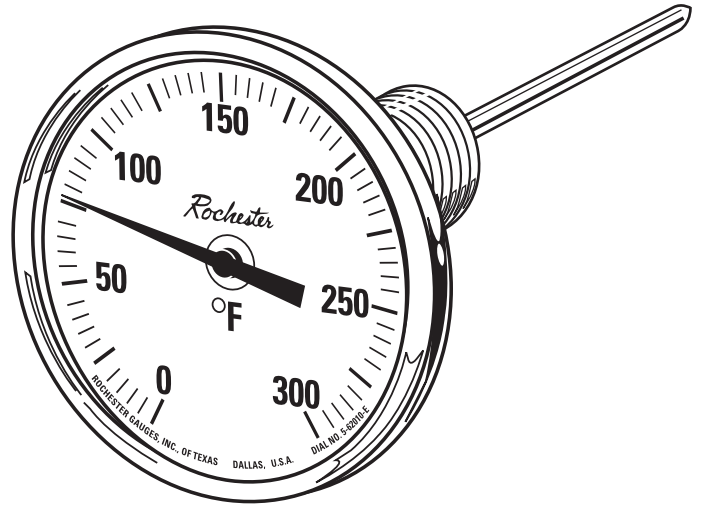
Aluminum

Sensing Element

Bimetallic

Lens

Glass (Plexiglas or tempered glass available at extra cost)



General Specifications

These units are not recalibratable. A 1/2" NPT threaded connection is standard. For greatest accuracy, the stem should be inserted at least 2" into liquids and 4" into gases. Prescribed accuracy is 1% of scale range. Each thermometer is hermetically sealed and dampened. Maximum stem length on models with max/min pointer is 24", and minimum length is 4" on both models.

How To Order

R = Rear mounted

G = Glass lens

14 = 4" size

50 = 1/2" NPT threaded connection

- = Hyphen

0 = No special feature

M = Maximum/minimum indicator feature

10 = 0° to 300°F temperature range

09 = 9" stem length

Example: RG1450-M1009

Available Temperature Ranges

Fahrenheit		Centigrade	
08	0° to 100°	30	-10° to 110°
10	0° to 300°	33	0° to 200°
11	0° to 500°	64	0° to 120°
12	0° to 800°		
13	25° to 125°		
14	30° to 240°		
17	50° to 400°		
19	150° to 750°		
21	200° to 1000°		
25	-70° to 150°		
		Dual-scale	
		68	10° to 150°C 50° to 300°F

Other ranges and scales may be available if justified by quantity.

08, 13, & 19 are not available with max./min. option.

Application

These 5" [125 mm] thermometers can be adjusted to achieve any desired angle of dial face in relation to the stem, thus giving maximum flexibility with minimum inventory. They have been adopted as standard in many sectors of the oil, chemical, food, paper, textile and power industries since they will withstand rough handling and difficult environments.

Materials Of Construction

Case, Stem, Bezel & Nut

Type 304 stainless steel case

Dial

Aluminum

Sensing Element

Bimetallic

Lens

Glass (Plexiglas or tempered glass available at extra cost)

General Specifications

A slotted screw recal device and a 1/2" NPT threaded connection are standard. For greatest accuracy, the stem should be inserted at least 2" into liquids and 4" into gases. Prescribed accuracy is 1% of scale range. Each thermometer is hermetically sealed and dampened.

How To Order

A = Any angle mounting

G = Glass lens

15 = 5" size

50 = 1/2" NPT threaded connection

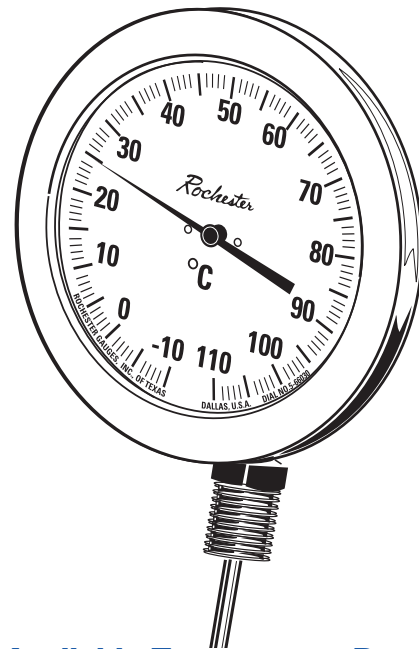
- = Hyphen

R = Recal feature

10 = 0° to 300°F temperature range

09 = 9" stem length

Example: AG1550-R1009



Available Temperature Ranges

Fahrenheit		Centigrade									
01	-150° to 50°	26	-100° to 50°								
03	-50° to 120°	28	-50° to 50°								
06*	-40° to 160°	29	-50° to 100°								
08	0° to 100°	30	-10° to 110°								
10	0° to 300°	31	0° to 50°								
11	0° to 500°	32	0° to 150°								
12	0° to 800°	33	0° to 200°								
13	25° to 125°	34	0° to 300°								
14	30° to 240°	35	0° to 400°								
16	50° to 350°	47	-20° to 120°								
17	50° to 400°	56	100° to 540°								
19	150° to 750°										
21*	200° to 1000°										
24	0° to 220°	<table border="1"> <thead> <tr> <th colspan="2">Dual-scale</th> </tr> </thead> <tbody> <tr> <td>40</td> <td>-70° to 50°C -90° to 130°F</td> </tr> <tr> <td>43</td> <td>0° to 300°C 40° to 570°F</td> </tr> <tr> <td>68</td> <td>10° to 150°C 50° to 300°F</td> </tr> </tbody> </table>		Dual-scale		40	-70° to 50°C -90° to 130°F	43	0° to 300°C 40° to 570°F	68	10° to 150°C 50° to 300°F
Dual-scale											
40	-70° to 50°C -90° to 130°F										
43	0° to 300°C 40° to 570°F										
68	10° to 150°C 50° to 300°F										
25	-70° to 150°										
49	0° to 250°										

Other ranges and scales may be available if justified by quantity.

The Measure of Excellence

06/01/00

Application

These 5" [125 mm] thermometers are used extensively in oil and chemical processing plants and have been adopted as standard in the food, paper, textile and power industries as well because of their ability to withstand rough treatment and difficult environments.

Materials Of Construction

Case, Stem, Bezel & Nut

Type 304 stainless steel case

Dial

Aluminum

Sensing Element

Bimetallic

Lens

Glass (Plexiglas or tempered glass available at extra cost)

General Specifications

This thermometer incorporates a recal feature. A 1/2" NPT threaded connection is standard. For greatest accuracy, the stem should be inserted at least 2" into liquids and 4" into gases. Prescribed accuracy is 1% of scale range. Each thermometer is hermetically sealed and dampened.

How To Order

B = Bottom mounted

G = Glass lens

15 = 5" size

50 = 1/2" NPT threaded connection

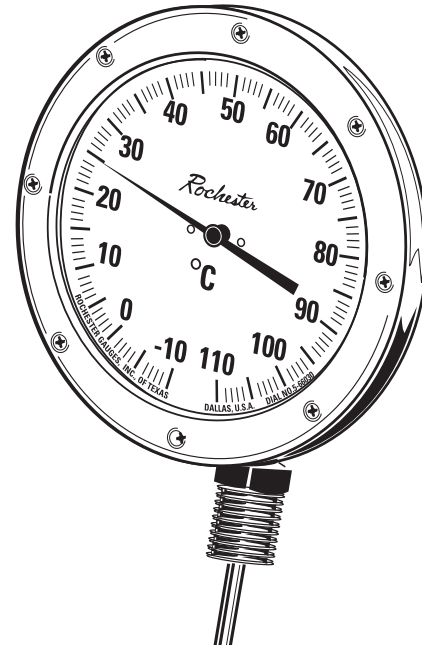
- = Hyphen

R = Recal feature

25 = -70° to +150°F temperature range

15 = 15" stem length

Example: BG1550-R2515



Available Temperature Ranges

Fahrenheit		Centigrade	
01	-150° to 50°	30	-10° to 110°
03	-50° to 120°	31	0° to 50°
06*	-40° to 160°	32	0° to 150°
08	0° to 100°	33	0° to 200°
09	0° to 200°	34	0° to 300°
10	0° to 300°	35	0° to 400°
11	0° to 500°	56	100° to 540°
12	0° to 800°	Dual-scale 40 -70° to 50°C -90° to 130°F 43 0° to 300°C 40° to 570°F	
13	25° to 125°		
14	30° to 240°		
16	50° to 350°		
17	50° to 400°		
19	150° to 750°		
21*	200° to 1000°		
24	0° to 220°		
25	-70° to 150°		
49	0° to 250°		

Other ranges and scales may be available if justified by quantity.

Application

These 5" [125 mm] thermometers are used extensively in oil and chemical processing plants and have been adopted as standard in the food, paper and textile and power industries as well because of their ability to withstand rough treatment and difficult environments.

Materials Of Construction

Case, Stem, Bezel & Nut

Type 304 stainless steel case

Dial

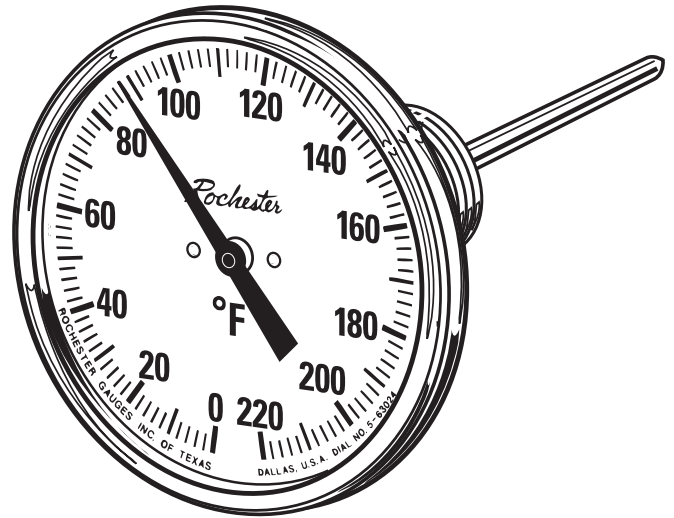
Aluminum

Sensing Element

Bimetallic

Lens

Glass (Plexiglas or tempered glass available at extra cost)



General Specifications

These thermometers are available with or without a recal feature - please specify your needs. A 1/2" NPT threaded connection is standard. For greatest accuracy, the stem should be inserted at least 2" into liquids and 4" into gases. Prescribed accuracy is 1% of scale range. Each thermometer is hermetically sealed and dampened.

How To Order

B = Bottom mounted

G = Glass lens

15 = 5" size

50 = 1/2" NPT threaded connection

- = Hyphen

0 = No special feature

R = Recal feature

11 = 0° to 500°F temperature range

06 = 6" stem length

Example: RG1550-R1106

Available Temperature Ranges

Fahrenheit		Centigrade									
01	-150° to 50°	30	-10° to 110°								
03	-50° to 120°	31	0° to 50°								
06*	-40° to 160°	32	0° to 150°								
08	0° to 100°	33	0° to 200°								
10	0° to 300°	34	0° to 300°								
11	0° to 500°	56	100° to 540°								
12	0° to 800°	<table border="1"> <thead> <tr> <th colspan="2">Dual-scale</th> </tr> </thead> <tbody> <tr> <td>40</td> <td>-70° to 50°C -90° to 130°F</td> </tr> <tr> <td>43</td> <td>0° to 300°C 40° to 570°F</td> </tr> <tr> <td>68</td> <td>10° to 150°C 50° to 300°F</td> </tr> </tbody> </table>		Dual-scale		40	-70° to 50°C -90° to 130°F	43	0° to 300°C 40° to 570°F	68	10° to 150°C 50° to 300°F
Dual-scale											
40	-70° to 50°C -90° to 130°F										
43	0° to 300°C 40° to 570°F										
68	10° to 150°C 50° to 300°F										
13	25° to 125°										
14	30° to 240°										
16	50° to 350°										
17	50° to 400°										
19	150° to 750°										
21*	200° to 1000°										
24	0° to 220°										
25	-70° to 150°										
49	0° to 250°										

Other ranges and scales may be available if justified by quantity.

06/01/00