

INSTRUMENTS • CONTROLS • VALVES
 CLICK TO VISIT OUR WEBSITE
ARCO Engineering, Inc.
 SINCE 1954
 3317 Gilmore Industrial Blvd.
 Louisville, KY 40213
 Ph: (502) 966-3134
 Fx: (502) 966-3135
 www.arcoengineering.com

SPECIFICATIONS:

(SPECIFICATIONS AT 25°C (77°F) AND NOMINAL VOLTAGE UNLESS OTHERWISE NOTED).

MECHANICAL:

WETTED MATERIALS: 316 STAINLESS STEEL
 ENCLOSURE: TYPE 360 ALUMINUM; EPOXY POWDER COATED

ELECTRICAL:

ELECTRICAL CONNECTIONS:

POWER SUPPLY: 3 POSITION TERMINAL BLOCK, 22-14 AWG WIRE
 POWER INPUT: 4-20mA LOOP POWERED (20-40 Vdc)
 (REFERENCE I&M FOR ALLOWABLE POWER SUPPLY AND LOAD LIMITS)

SAFETY RELAY OUTPUT:

I&W: 2 POSITION TERMINAL BLOCK, 16-26 AWG WIRE, 30Vdc @ 20mA (MAX)
 SWITCH STATUS: 2 POSITION TERMINAL BLOCK, 16-26 AWG WIRE, 30Vdc @ 20mA (MAX)

SWITCH SPECS:

4 POSITION TERMINAL BLOCK, 14-20 AWG WIRE
 250VAC @ 5A

APPROVALS:

cULus Listed
 CLASS I, DIVISION 1, GROUPS A, B, C & D;
 CLASS II, DIVISION 1, GROUPS E, F & G; CLASS III
 CLASS I, ZONE 1, AEx d IIC T5; CLASS 1, ZONE 1, Ex d IIC T5
 Tamb = -40°C TO +70°C (-40°F TO 158°F)
 ENCLOSURE TYPE 4X; IP66

ATEX Approved
 II 2 G Ex d IIC T5
 II 2 D Ex ID A21 IP66 T+90C
 DEMKO 09 ATEX 0813748X
 Tamb = -40°C TO +70°C (-40°F TO 158°F)

IECEx Approved
 IECEx UL 08.0017
 Ex d IIC T5
 Ex ID A21 IP66 T+90C
 Tamb = -40°C TO +70°C (-40°F TO 158°F)

| MODEL | TEMPERATURE RANGE | EXTENSION LENGTH | |
|-------|--------------------------------|------------------------------------|-----------|
| | | ft | [meter] |
| TR1 | -40 TO 450°F/ -40 TO 232°C | 6' | [1.8] |
| TRC | -40 TO 450°F/ -40 TO 232°C | UP TO 30' max. IN 1' INCREMENTS | [9.1] MAX |
| TH1 | -40 TO 1000°F/ -40 TO 538°C | 6' | [1.8] |
| THC | -40 TO 1000°F/ -40 TO 538°C | UP TO 30' max. IN 1' INCREMENTS | [9.1] MAX |
| TC1 | -300 TO 200°F/ -184 TO 93°C | 6' | [1.8] |
| TCC | -300 TO 200°F/ -184 TO 93°C | UP TO 30' max. IN 1' INCREMENTS | [9.1] MAX |

| REV. | ECN# | DESCRIPTION | DATE | DRWN | APPD |
|------|-------|--|----------|------|------|
| E | E5644 | AGENCY TEMPERATURE CODE T5 WAS T3/T5* | 10-9-15 | SR | RAM |
| D | E5527 | DRILLED HOLES IN CASTING NOW CORED. | 6-15-15 | RJG | RAM |
| C | E5171 | REMOVED "M" MODELS P10-P16 HAVE A TEMPERATURE CLASS OF T3. ALL OTHER MODELS HAVE A T5 TEMPERATURE CLASS." FROM APPROVALS | 5-29-14 | NAB | RG |
| B | E5017 | REPLACED "SWITCH" WITH "SAFETY XMITTER" IN TITLE. | 1-16-14 | SR | ASK |
| A | E4967 | INITIAL RELEASE | 11-22-13 | ASK | AJC |

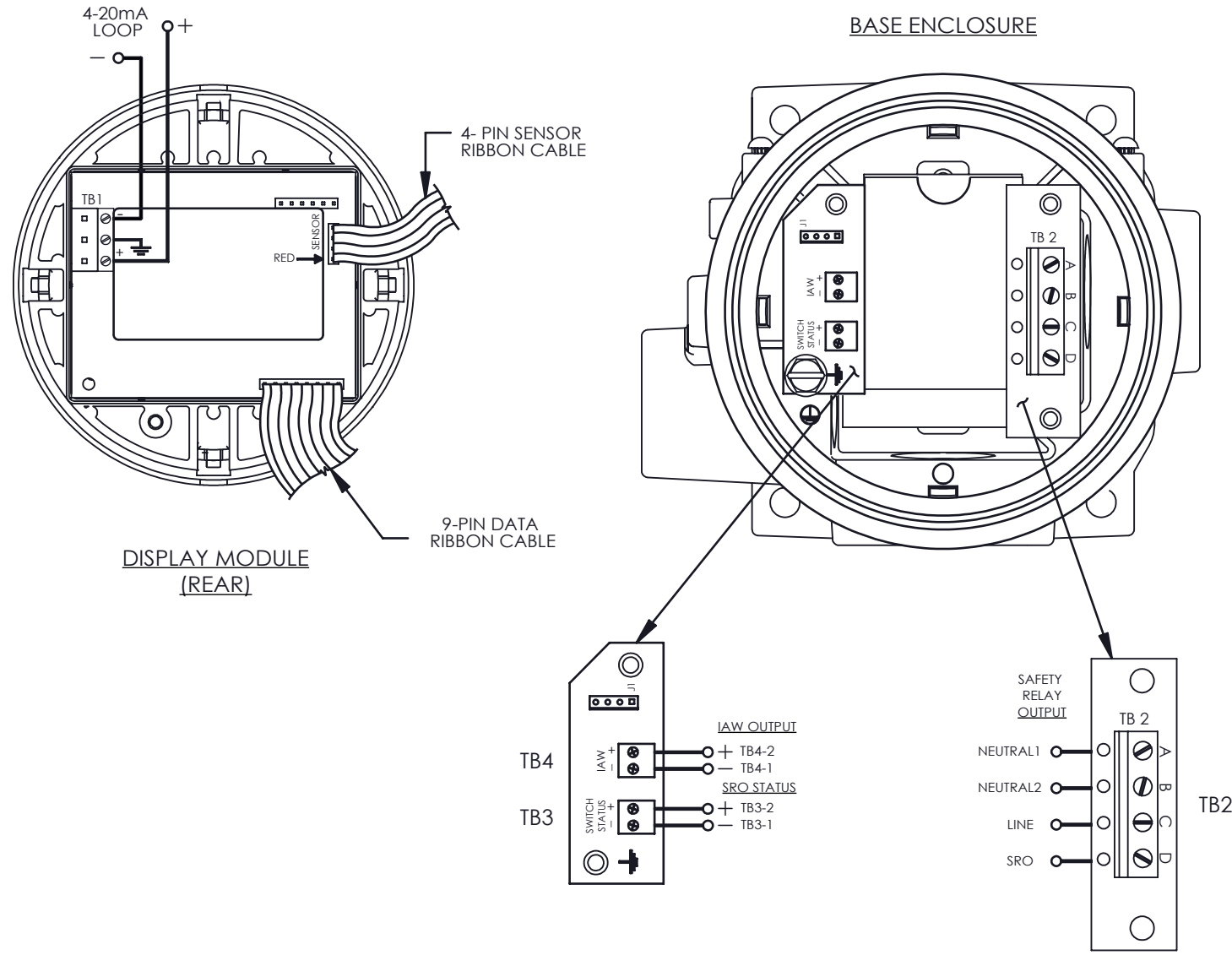
| | |
|---|--------------------|
| ORIGINAL DATE | 11-22-13 |
| DRWN | A. KARLGREN |
| CHKD | SR |
| APPD | AJC |
| UNLESS OTHERWISE SPECIFIED DIMENSIONS ARE IN INCHES | |
| TOLERANCES ON FRACTIONS ±1/64 | |
| 2 PLACE DEC ±0.010 | 3 PLACE DEC ±0.005 |
| ANGLES ±1/2° | |
| DO NOT SCALE THIS DRAWING | |

TITLE
**2SLP
 REMOTE
 TEMP.
 SAFETY
 XMITTER**
 SCALE 1:1

UE
 UNITED ELECTRIC
 CONTROLS COMPANY
 WATERTOWN • MASSACHUSETTS
 DWG NO Page 1 of 2
A-14009

THIS DOCUMENT IS PROPRIETARY PROPERTY OF UNITED ELECTRIC CONTROLS. UNAUTHORIZED USE IS STRICTLY PROHIBITED.

2SLP WIRING DIAGRAM



| REV. | ECN# | DESCRIPTION | DATE | DRWN | APPD |
|------|-------|-----------------|----------|------|------|
| E | E5644 | SEE PG. 1 OF 2. | 10-9-15 | SR | RAM |
| D | E5527 | SEE PG. 1 OF 2. | 6-15-15 | RJG | RAM |
| C | E5171 | SEE PG. 1 OF 2. | 5-29-14 | NAB | RG |
| B | E5017 | SEE PG. 1 OF 2. | 1-16-14 | SR | ASK |
| A | E4967 | INITIAL RELEASE | 11-22-13 | ASK | AJC |

| | | |
|---|-------------|--------|
| ORIGINAL DATE | 11-22-13 | |
| DRWN | A. KARLGREN | |
| CHKD | SR | |
| APPD | AJC | |
| UNLESS OTHERWISE SPECIFIED DIMENSIONS ARE IN INCHES | | |
| TOLERANCES ON FRACTIONS ±1/64 | | |
| 2 PLACE DEC | 3 PLACE DEC | ANGLES |
| ±0.010 | ±0.005 | ±1/2° |
| DO NOT SCALE THIS DRAWING | | |

TITLE
**2SLP
 REMOTE
 TEMP.
 SAFETY
 XMITTER**

SCALE 1:1

UNITED ELECTRIC
 CONTROLS COMPANY
 WATERTOWN * MASSACHUSETTS

DWG NO Page 2 of 2
A-14009